



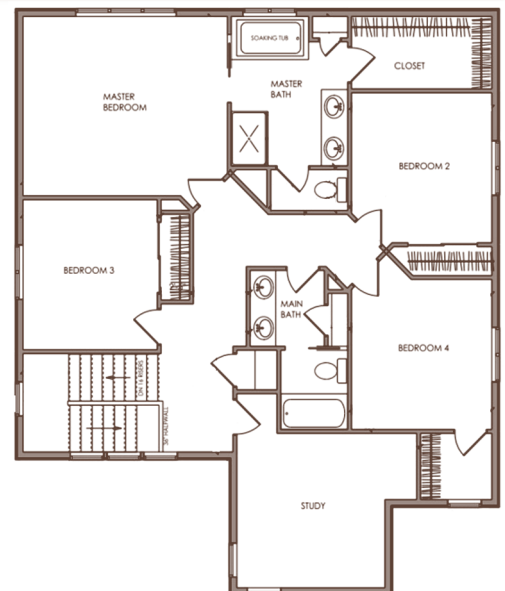
MASSARRA THE HARTLEY



4-Bedrooms/2.5-Bath - 2,325 Sq. Ft. ~ Possible Lots: 1, 7, 15, 16



Zetterberg Homes is back in Puyallup. 'Massarra' is our newest community w/18 huge homesites. This plan is called the Hartley, a home with a true 3-car garage, 4 LG bedrooms, study, & outdoor living. Then there are the things you just expect from Zetterberg: the best of construction & reputation, Hand built wood cabinets, cutting edge styling w/out losing the feeling of a home. This is the most affordable home in this community. Act fast!



Mark W. Johnson
Real Estate Marketing

MARK W. JOHNSON

253-606-3275

mark@muchbetterhomes.com

kw
KELLER WILLIAMS.
REAL ESTATE