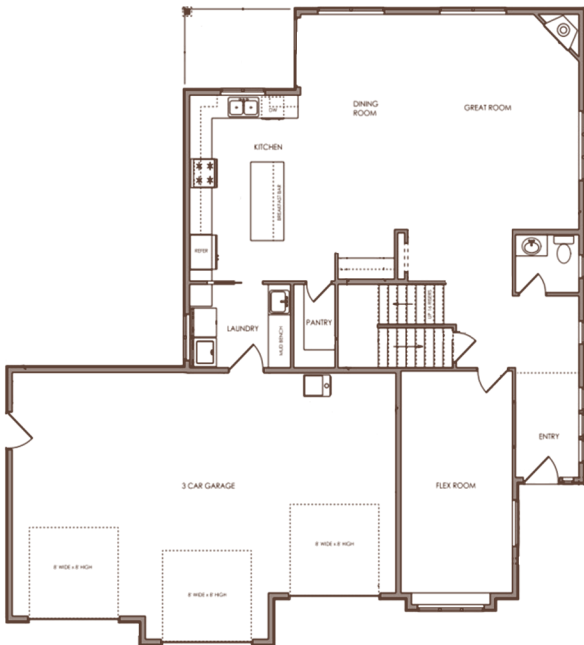




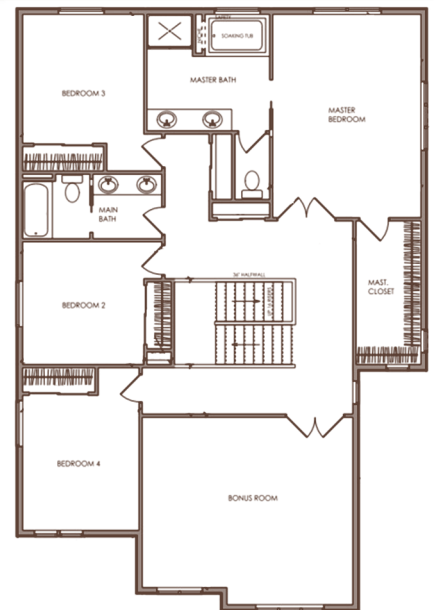
MASSARRA THE WHITLEY



4-Bedrooms/2.5-Bath - 2,944 Sq. Ft. ~ Possible Lots: 6, 9, 15, 16, 18



Zetterberg Homes is back in Puyallup. 'Massarra' is our newest community w/18 huge home-sites. New floorplans designed to cater to this community. This plan is called the Whitley, a home with a true 3 car garage, 4 LG bedrooms, huge bonus room, mainfloor "flex" room that has a ton of possibilities, outdoor living. Then there are the things you just expect from Zetterberg: the best of construction & reputation, Hand built wood cabinets, cutting edge styling w/out losing the feeling of a home.



Mark W. Johnson
Real Estate Marketing

MARK W. JOHNSON

253-606-3275

mark@muchbetterhomes.com

kw
KELLERWILLIAMS.
REAL ESTATE