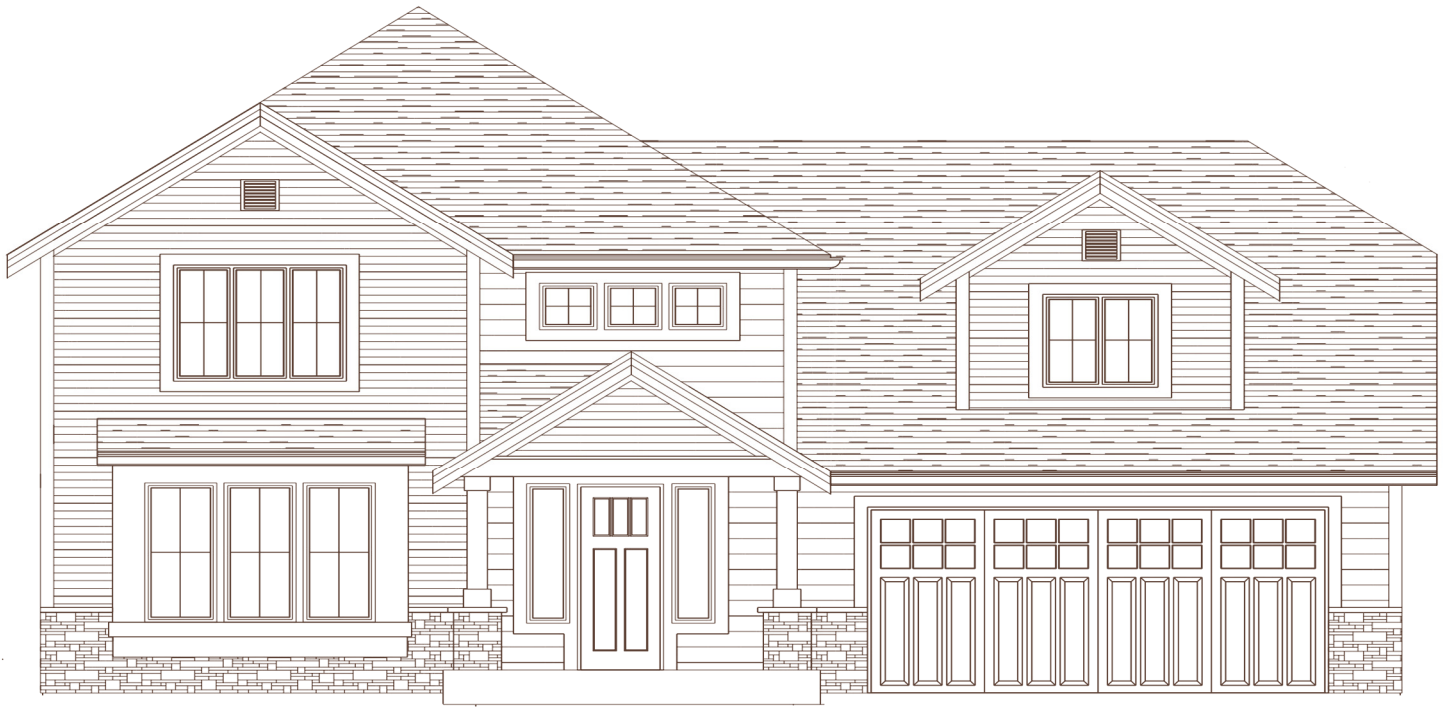


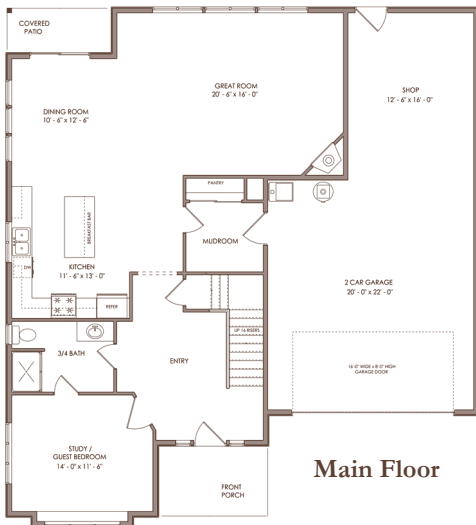


SUMNER VALLEY ESTATES

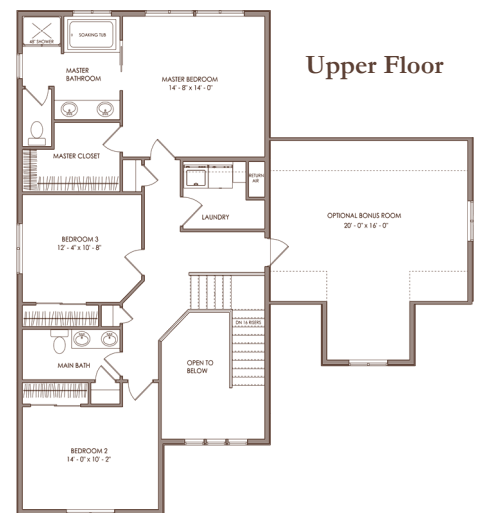
THE DRAYTON



4-Bedrooms/2.75-Bath - 2,908 Square Feet ~ Possible Lots: 1-7, 12, 14-17, 26-29



Sager Family Homes has designed homes to look like they were always part of Sumner's history. Walk to the river at the end of the road & picnic under the canopy of trees. Sumner still has tree lined streets, bicycles parked in front of schools & a never ending calendar of community events. This is the newest community in the city with a floorplan for everyone: ramblers, masters on the main floor & 2 Story plans. This is the Drayton floor plan, it features 4 bedrooms, 2.75 baths, 3-Car Garage, Covered Patio & Huge Bonus Room.



Mark W. Johnson
Real Estate Marketing

MARK W. JOHNSON

253-606-3275

mark@muchbetterhomes.com

kw
KELLERWILLIAMS.
REAL ESTATE