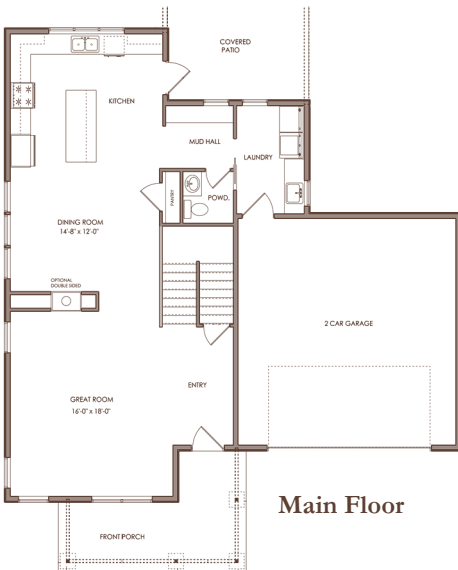




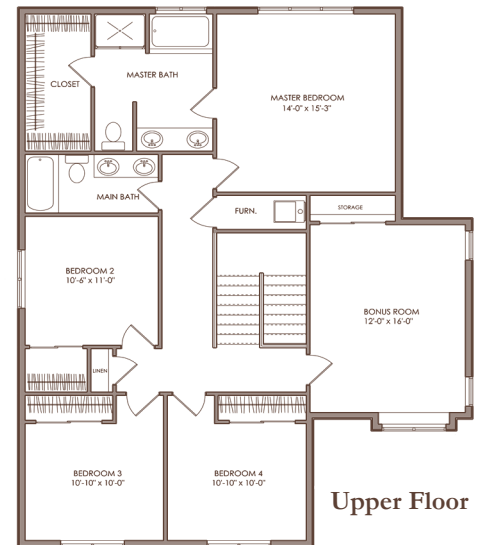
SUMNER VALLEY ESTATES THE PROVIDENCE



4-Bedrooms/2.5-Bath - 2,389 Square Feet ~ Possible Lots: 1-10, 14-17, 26-28



Sager Family Homes has designed homes to look like they were always part of Sumner's history. Walk to the river at the end of the road & picnic under the canopy of trees. Sumner still has tree lined streets, bicycles parked in front of schools & a never ending calendar of community events. This is the newest community in the city with a floorplan for everyone: ramblers, masters on the main floor & 2 Story plans. This is the Providence floor plan, it features 4 bedrooms, 2.5 baths, 2-Car Garage, & Bonus room upstairs.



Mark W. Johnson
Real Estate Marketing

MARK W. JOHNSON

253-606-3275

mark@muchbetterhomes.com

kw
KELLERWILLIAMS.
REAL ESTATE